



High Tech Incubator in Data Analytics and Artificial Intelligence applied to the marine and maritime environment



Cofinanciado por
la Unión Europea



MINISTERIO
DE HACIENDA
Y FUNCIÓN PÚBLICA



Fondos Europeos

Cámaras
Fundación INCYDE



spegc
Sociedad de
Promoción Económica

Context

The High Tech Incubator in Data Analytics and Artificial Intelligence applied to the marine-maritime environment is a national reference center that serves entrepreneurs and SMEs developing innovative projects in these technological fields, with potential for local, national, and international projection.

The Government of Gran Canaria, through the Society of Economic Promotion of Gran Canaria (SPEGC), aims to establish the island as a hub of innovation and entrepreneurship in the marine and maritime sector, specifically in the use of data analytics, artificial intelligence, and other connected technologies such as Blockchain, IoT, robotics, sensorization, autonomous vehicles, digital twins, artificial vision, augmented and virtual reality, additive manufacturing, etc.

This project is promoted by the **SPEGC, funded by the Chambers of Commerce's Foundation (INCYDE), and co-financed by the European Regional Development Fund (ERDF), covering 85% of the costs, as part of the Multi-regional Operational Programme of Spain ERDF 2014-2020, "A way of doing Europe.**

Marine & Maritime High Tech Incubator



The High Tech Incubator in Data Analytics and Artificial Intelligence applied to the marine-maritime environment is a significant catalyst for companies, providing them with technical support and entrepreneurial guidance to accelerate their projects and develop new business models centered around data exploitation, advanced analytics, and the integration of Artificial Intelligence and Machine Learning.

This Marine & Maritime High Tech Incubator, along with Gran Canaria, is emerging as a valuable resource and strategic hub for companies aiming to seize the opportunities presented by the blue economy and contribute to the sector's digital transformation.

Sectors



Port and
Logistics
services

Renewable
energy

Maritime
Transport

Offshore
Services

Other blue
economy
sectors

AI + DATA + BLOCKCHAIN + IoT + ROBOTICS + SENSING + AUTONOMOUS VEHICLES + DIGITAL TWINS

Partner Entities



EXPERIMENTAL ENVIRONMENTS

Explore new frontiers in our Experimental Environments, where innovation thrives, and boundaries are pushed.

EXPERT ADVICE ON TECHNOLOGICAL SKILLS

Unlock your potential with expert guidance on technological skills.

PARTNERSHIPS

Partnerships play a crucial role in driving innovation and growth.

TALENT

Talent is the driving force behind every successful organization.

Service to companies

Services will be provided in online or face-to-face format.

Free services



S1.

ACCELERATION PROGRAMMES

S2.

SPECIALISED ADVICE

S3.

SPECIALISED WORKSHOPS & PROMOTIONAL EVENTS

S4.

OTHER SERVICES: LABS AND TESTING, CLOUD COMPUTING, WORKSPACES, SPEGC FUNDING INSTRUMENTS.

S1. Acceleration Programmes

Acceleration Programm

Acceleration Programme (35 hours) September - December 2023

Content:

- Unique training (MIT methodology)
- Specialised consultancy
- Experimentation and testing environments
- Partner search
- Dedicated lead mentor for each project
- Connections with investors (Demo Day)

Other IAT services

Specialised workshops

Workspace

Marine-Maritime
Innovation Centre

Cloud Services

Access to SPEGC
Financial Instrument

S2. Specialised Advice

Individual advisory services to companies or cooperative projects through mentoring and specialised face-to-face and online consultancy in the following areas, depending on the degree of development of the project.

The beneficiaries of these services **will be incubated companies and Marine-Maritime High Tech Incubator collaborators.**



**Business,
internationalisation and
financing**
Total: 450 hours



**Financing R&D and IT
projects**
Total: 600 hours



**Technological (Data, AI
and other technologies)**
Total: 1350 hours



**Legal and tax
framework**
Total: 320 hours

S3. Specialised workshops and promotional events

20 group workshops will be held on different topics, focused on business and technological areas of specialisation of the Marine & Maritime High Tech Incubator.

7 promotional events will take place, with the aim of disseminating experiences and good practices, generating interconnection between agents of the ecosystem and reinforcing the positioning of the incubated companies and of the Marine & Maritime High Tech Incubator itself:

- 1 international meeting in 'Summit'/business meeting format.
- 1 Datathon, international event in competition format on data analytics.
- 5 technical events (talks, conferences, Investor Days).

Other services

LABORATORY AND TESTING

CLOUD COMPUTING

WORK SPACES

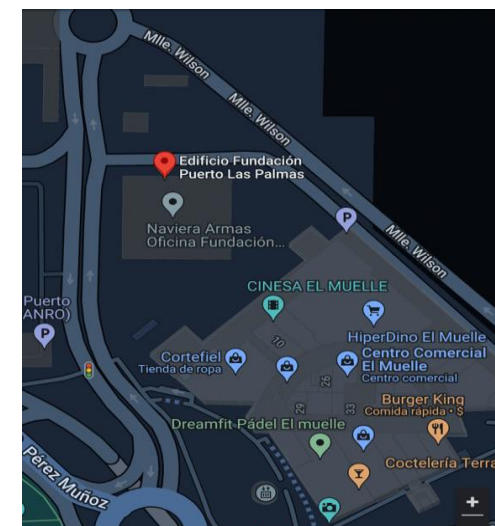
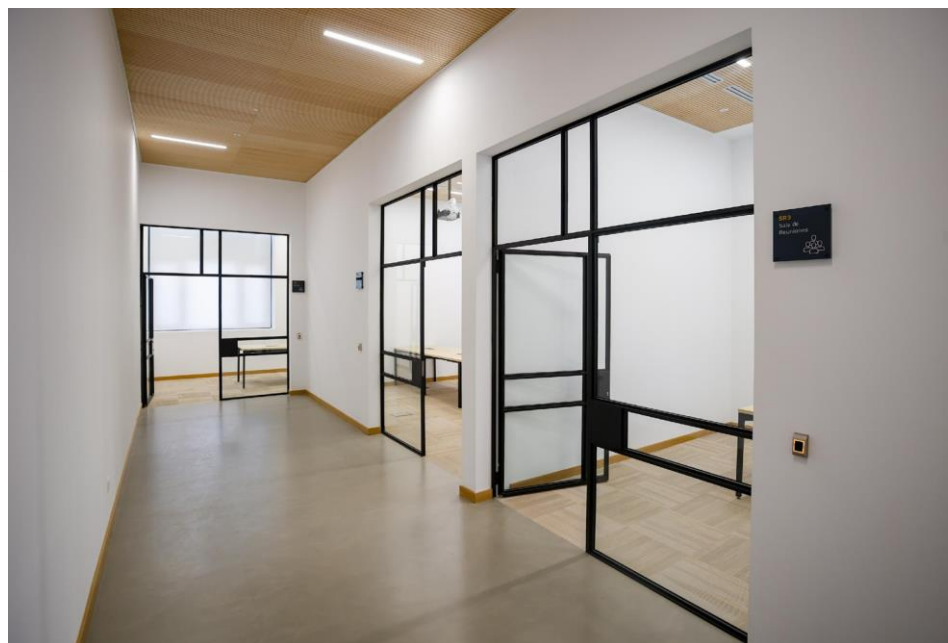
FINANCING INSTRUMENTS



Workspaces



Marine-Maritime Innovation Centre



Location:
Marine-Maritime Innovation
Centre (CIMM1).
Fundación Puerto Las Palmas
Building,
Muelle de Sta. Catalina, s/n, 35008
Las Palmas de Gran Canaria

Marine & Maritime High Tech Incubator Advantages



MEETING POINT

TECHNOLOGICAL
KNOW-HOW

BUSINESS
OPPORTUNITIES

VISIBILITY AND
PROMOTION

PARTNERSHIPS

REAL EXPERIMENTAL
ENVIRONMENTS

WORK SPACES

TALENT

Contact details



Management Team
Marine & Maritime High Tech
Incubator
iatmarinomaritima@spegc.org

www.iatmarinomaritima.com





More information and registration at
www.iatmarinomaritima.com

[Sign up](#)

Management Team IAT Marine-Maritime
iatmarinomaritima@spegc.org



Cofinanciado por
la Unión Europea



MINISTERIO
DE HACIENDA
Y FUNCIÓN PÚBLICA



Fondos Europeos

Cámaras
Fundación INCYDE



spegc
Sociedad de
Promoción Económica